

Midpoint performance test protocol

Performance testing (version 2.2 demo)
Revision 6096

HW configuration

CPU: Intel(R) Core(TM) i5-2500K CPU 3.30GHz

RAM: 8.00 GB DDR3

Motherboard: Asus P8P67 DELUXE

GPU: NVIDIA Gainward GeForce GTX 570 Limited edition 2048MB

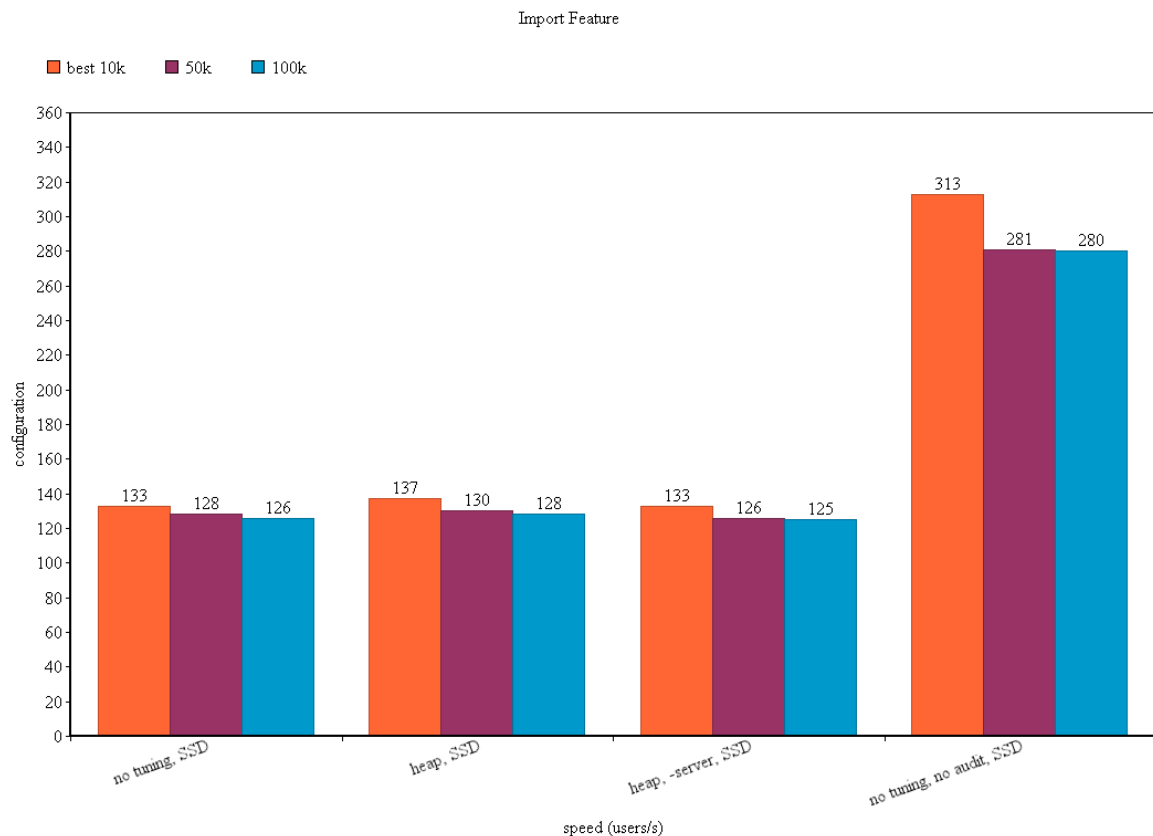
SW configuration

OS: Windows 7 Professional with SP1, 64b

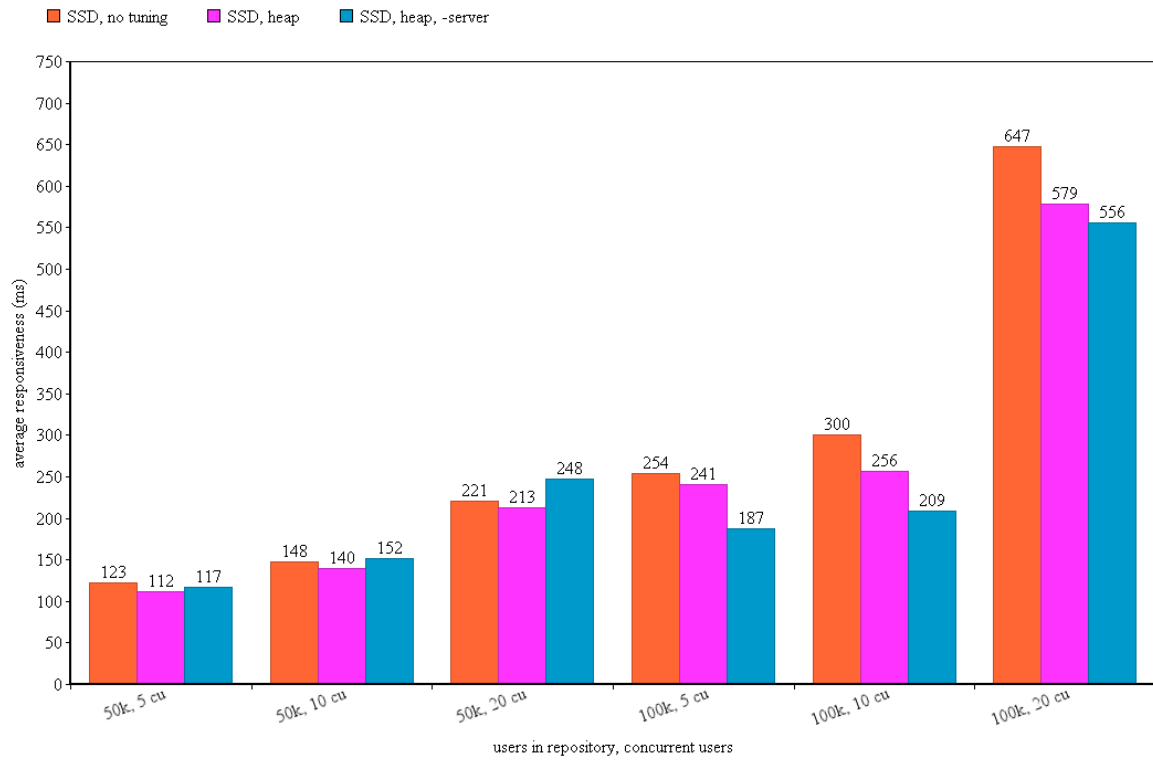
Web Container: Tomcat 7.0

MS SQL Server 2012 SP1 Express Edition

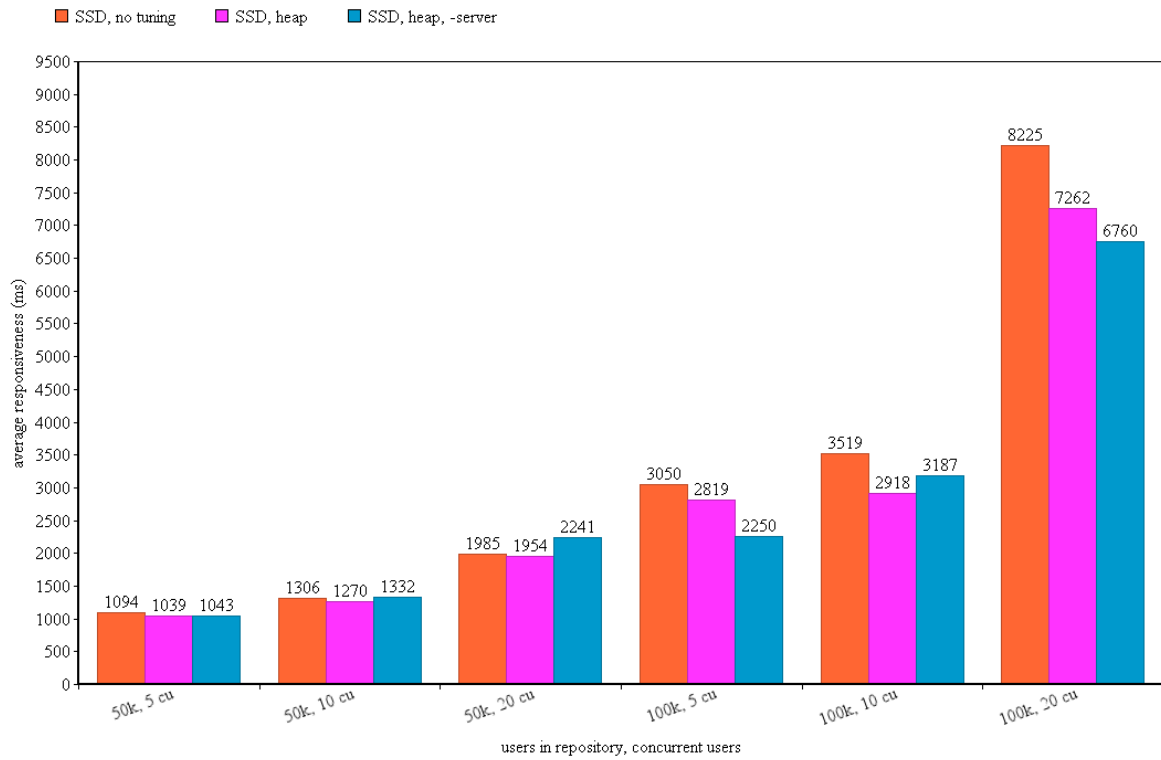
Overall Statistics

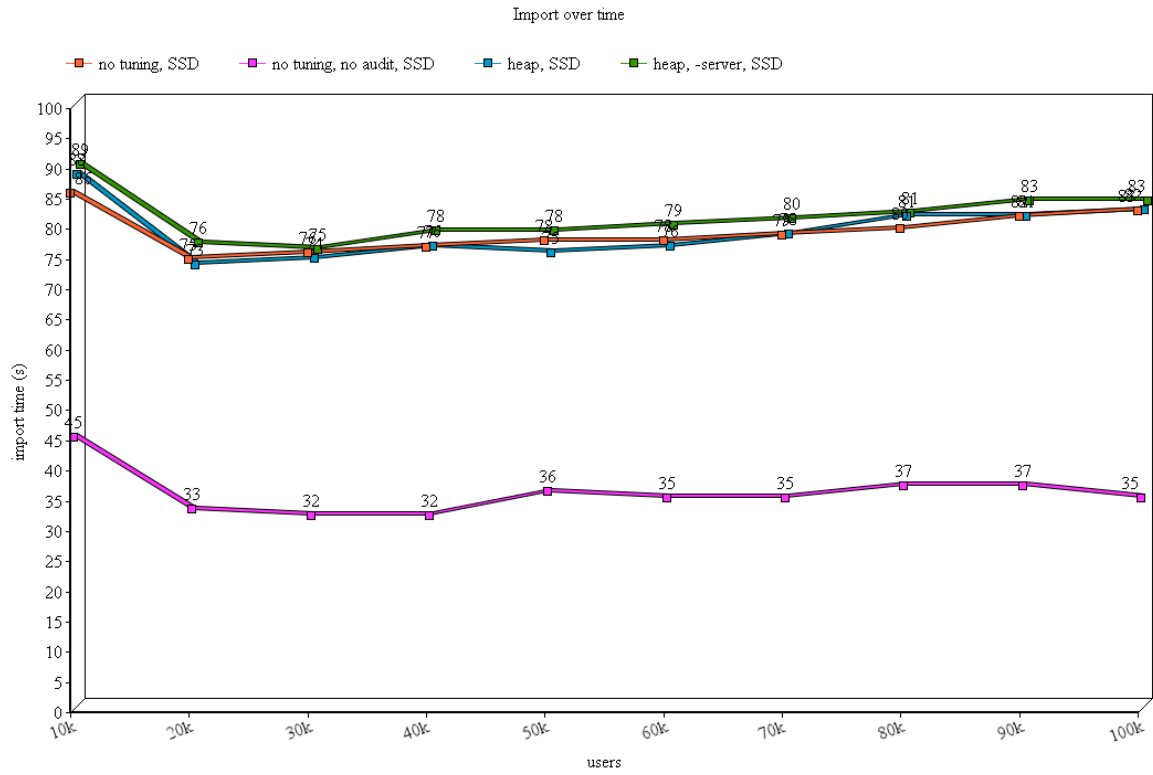


Responsiveness



Users Page Request





MS SQL repository (no JVM tuning) - SSD

Import Feature Performance

	10 000	50000	100 000	500 000	1 000 000
DB size [MB]	-	-	2530	-	-
Users per second	133	128	126	-	-
Total time [s]	75	392	794	-	-

Import over time

100k	10k	20k	30k	40k	50k	60k	70k	80k	90k	100k
Time [s]	86	75	76	77	78	78	79	80	82	83

	50 000 users in repository			100 000 users in repository		
	5 users	10 users	20 users	5 users	10 users	20 users
MidPoint	45	47	47	46	50	51
Login	90	183	314	110	215	394
Dashboard	37	41	84	41	65	109
List users	1094	1306	1985	3050	3519	8225
Open user	74	87	164	106	117	216
List roles	94	86	137	62	93	192
Open role	55	66	76	42	60	108
List resources	46	73	76	51	69	92
Work Items	57	35	44	45	41	66
List tasks	126	143	232	213	204	473
Add task	28	44	53	64	49	61
Open reports	44	51	43	40	52	60
Debug pages	60	92	106	82	110	134
Import object	25	27	42	24	32	29
Logging	58	60	71	60	70	79
Logout	40	35	59	38	60	66
Average	123	148	221	254	300	647

Average users page request with internalSize() count (cached for 60s): 2,753 s

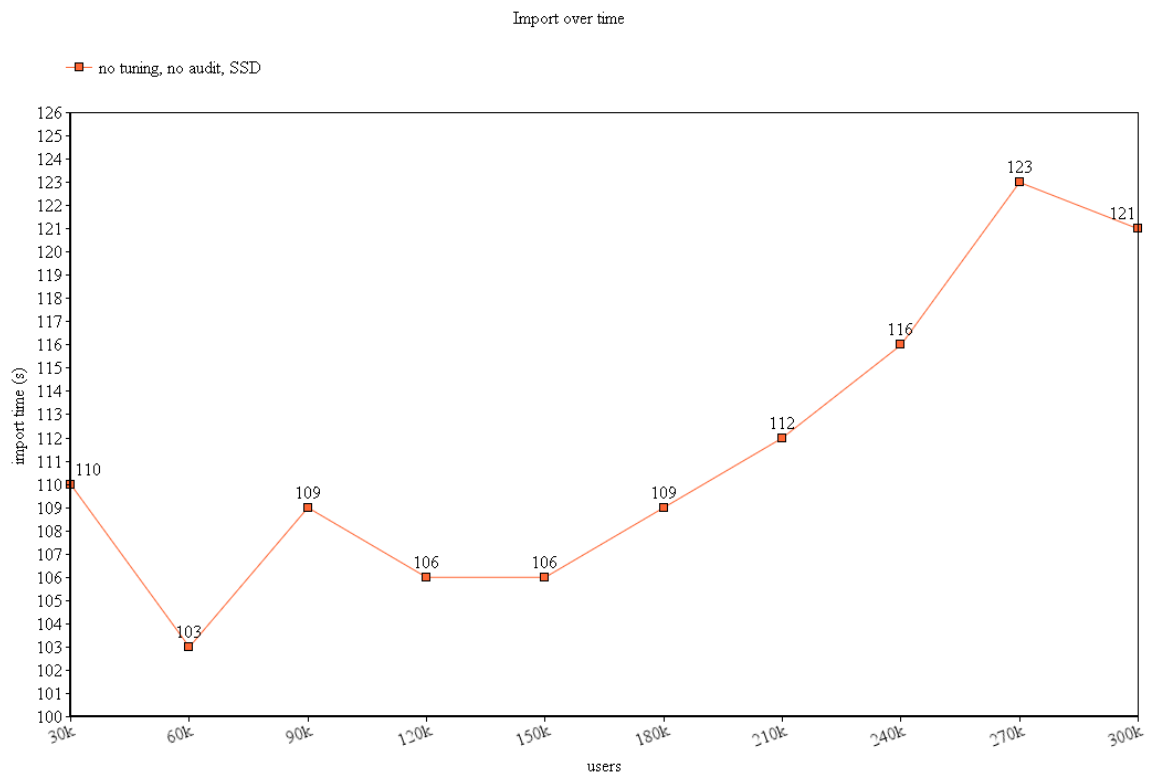
Import Feature Performance (no auditing)

	10 000	50000	100 000	300 000	1 000 000
DB size [MB]	-	-	809	2426	-
Users per second	313	281	280	269	-
Total time [s]	32	178	357	1115	-

Import over time (no auditing)

100k	10k	20k	30k	40k	50k	60k	70k	80k	90k	100k
Time [s]	45	33	32	32	36	35	35	37	37	35

300k	30k	60k	90k	120k	150k	180k	210k	240k	270k	300k
Time [s]	110	103	109	106	106	109	112	116	123	121



MS SQL repository (2G Xms, Xmx, 512m 2nd gen heap) - SSD

Import Feature Performance

	10 000	50000	100 000	500 000	1 000 000
DB size [MB]	-	-	2530	-	-
Users per second	137	130	128	-	-
Total time [s]	73	386	784	-	-

Import over time

100k	10k	20k	30k	40k	50k	60k	70k	80k	90k	100k
Time [s]	88	73	74	76	75	76	78	81	81	82

	50 000 users in repository			100 000 users in repository		
	5 users	10 users	20 users	5 users	10 users	20 users
MidPoint	45	43	45	46	108	48
Login	81	114	303	148	156	411
Dashboard	32	46	76	55	44	98
List users	1039	1270	1954	2819	2918	7262
Open user	65	92	165	105	103	182
List roles	58	95	136	72	88	173
Open role	59	49	77	63	56	112
List resources	64	49	65	58	53	92
Work Items	23	43	45	43	36	57
List tasks	77	145	204	178	206	389
Add task	39	41	45	43	55	75
Open reports	37	43	55	38	35	59
Debug pages	44	69	91	70	79	111
Import object	33	37	35	36	45	45
Logging	60	60	63	49	73	87
Logout	30	42	54	41	43	70
Average	112	140	213	241	256	579

MS SQL repository (-server, 2G Xms, Xmx, 512m 2nd gen heap) - SSD

Import Feature Performance

	10 000	50000	100 000	500 000	1 000 000
DB size [MB]	-	-	2530	-	-
Users per second	133	126	125	-	-
Total time [s]	75	396	802	-	-

Import over time

100k	10k	20k	30k	40k	50k	60k	70k	80k	90k	100k
Time [s]	89	76	75	78	78	79	80	81	83	83

	50 000 users in repository			100 000 users in repository		
	5 users	10 users	20 users	5 users	10 users	20 users
MidPoint	46	43	47	44	43	44
Login	107	186	361	89	228	504
Dashboard	40	47	86	32	82	99
List users	1043	1332	2241	2250	3187	6760
Open user	92	101	182	60	137	224
List roles	54	124	177	73	111	169
Open role	47	73	78	34	84	110
List resources	52	62	93	52	66	81
Work Items	30	38	48	24	40	56
List tasks	126	117	264	87	299	398
Add task	28	46	53	36	55	61
Open reports	32	48	57	31	39	60
Debug pages	50	94	105	69	120	128
Import object	27	28	36	30	24	36
Logging	57	59	79	47	69	90
Logout	33	41	61	33	51	69
Average	117	152	248	187	209	556